



WHO WE ARE

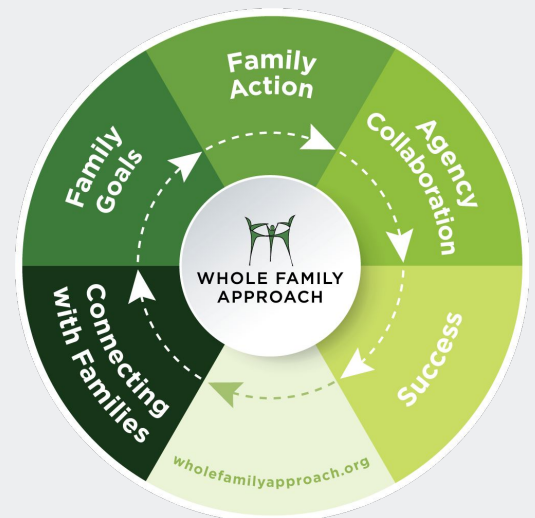
We believe every child deserves access to a well-rounded education that sets them up for success later in life. In Gloucester County, New Jersey, too many students lack access to the opportunities and support they need to thrive in school, leaving them less equipped to reach their full potential later in life.

Founded in 2008, St. Michael the Archangel Regional School sets students up for success inside and outside the classroom by equipping them with the tools, resources and support to develop crucial life skills that go beyond academics. Through comprehensive curricula designed for early childhood education through eighth grade, we open doors for students to hone their critical thinking skills, develop a strong worldview and enjoy learning along the way.

THE WHOLE FAMILY APPROACH

Meaningfully supporting our students means building connections with their caregivers too. While families are made up of individuals, their challenges and successes are interdependent. Our work is guided by the Whole Family Approach, a family-led strategy that equips adults and children with the tools and social support to set, plan, and achieve their goals together.

St. Michael was a founding members of the Child Connection Center (CCC) collaborative in 2013 along with the Clayton Public School District, Educational Information & Resource Center, Glassboro Public School District and Gloucester County Special Services School District. Now operating outside the collaboration, we implement the Whole Family Approach through the St. Michael Family Center. We focus on promoting positive youth development for students in the classroom and at home through in-school counseling, at-home behavior support, family plans and referrals to community resources.



BUILDING FAMILY STABILITY & WELL-BEING

We recognize that all areas of life are interconnected. Families cannot address one area without factoring in another. Findings from seven years of research, conducted by the Senator Walter Rand Institute for Public Affairs among families and teachers participating in CCC in New Jersey, show positive changes for families with two caregivers:

- Caregivers reported significantly improved mental and physical health.
- Caregivers and teachers saw a significant reduction in social and emotional behavioral difficulties at home and in the classroom.
- Students significantly improved their math and language arts grades over time.

These findings reinforce the positive impact of the holistic services we offer including: social-emotional learning, counseling, parent and teacher consultations, at-home and in-classroom behavior support, and community resources.



OUR IMPACT

During the 2019-2020 school year, we provided the following services:

19
parent meetings
to discuss
family goals

12
families received in-home
services like tutoring &
mental health resources

456
lessons on social
skills, self-esteem and
career preparation

OVERCOMING TRAGEDY TOGETHER

The Rogers family enrolled their children, Sara and Marcus, in CCC's social-emotional learning classes at the beginning of the school year. Classes went smoothly until tragedy struck halfway through the school year when Sara's father died suddenly. Right away, CCC arranged individual and group counseling sessions for Sara, where she learned about grief and how to process it. CCC staff began meeting regularly with the whole family, working together to create a home and school environment where Sara could continue to heal and maintain her academic performance. With support from CCC, Sara, her sibling, and her caregivers learned to improve their family communication and celebrate memories of Sara's father as part of healthy patterns moving forward.

OUR RESILIENCE

Our services have become even more important as families cope with uncertainty caused by the COVID-19 pandemic. After months of remote learning, our school has adapted to continue providing services with:

- A choice of in-person instruction with full safety protocols or remote learning for families who prefer keeping their students home; and
- Social-emotional learning sessions for groups and individuals.

TAKE ACTION

Join us in fostering a well-rounded, healthy learning environment for students and their families. Together, we can set students up for success in the classroom and beyond.

EVALUATION PARTNER



ST. MICHAEL
THE ARCHANGEL REGIONAL SCHOOL
51 West North Street, Clayton, NJ 08312

STMICHAELSONLINE.COM • @SMRSWARRIORS

