



WHO WE ARE

Cultivating human connections along with improving academic and career success is at the heart of Families to College. Launched in 2017, Families to College aims to improve academic and employment success throughout Cumberland County, New Jersey with a comprehensive, whole-family college readiness support program. Our goals are to strengthen bonding in the family unit, provide opportunities to discover career pathways, and support college degree attainment.

At the start of their journey, we connect each family with a trusted professional Family Mentor from the community. The Family Mentor guides the family in developing and carrying out their unique action plan to meet their individual and family goals.

Families to College is collaborative that brings together the strengths of four nonprofits to connect families with a full range of services: Appel Farm Arts & Music Campus, Rowan College of South Jersey, City of Bridgeton, and United Advocacy Group.

OUR 2020 IMPACT

14

high school graduates now attending college

23

families secured funding to pay for post-secondary education

50

families reported improved family interactions

NAVIGATING THE COLLEGE PROCESS

The Molina Family joined Families to College to rally behind their high school senior, Oscar Jr., as he navigated the college application and selection process. With Families to College's support, Oscar successfully applied to and attended Delaware State University, earning a 4.0 average by the end of his first year. Oscar's parents explained that completing college applications was like reading a foreign language, but the support provided by FTC staff was crucial to getting through it.

OUR RESILIENCE

While the COVID-19 pandemic disrupted many of our programs, we adapted to ensure our families' urgent needs were resolved. We supported families in the following ways:

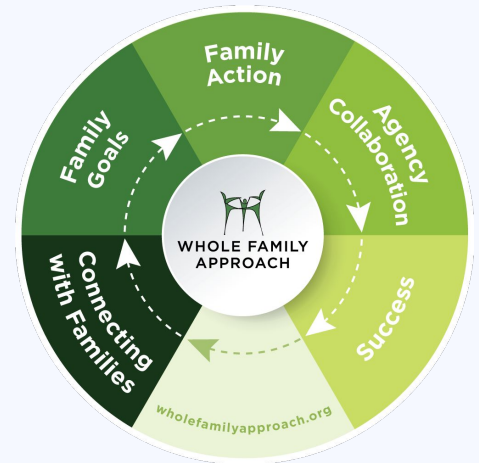
- Distributed 9,041 meals to provide food assistance to families
- Provided technology and internet support to close the digital divide
- Maintained social interactions through digital platforms

THE WHOLE FAMILY APPROACH

While families are made up of individuals, their challenges and successes are interdependent.

Our work is guided by the Whole Family Approach, a family-led strategy which equips adults and children with the tools and social support to set, plan for, and achieve their goals together. When the whole family works together to support each other's goals, long-term change and stability become a reality.

Our Family Mentors act as a trusted entry point for all family members to access the services we offer to achieve their goals, ranging from financial fitness to career advancement, healthy relationship and child well-being. Seamless collaboration between nonprofits in our collaborative yields better access to services, ensures a coordinated effort to track families' progress and improves well-being for the entire family.



BUILDING FAMILY STABILITY AND WELL-BEING

We recognize that all areas of life are interconnected. Families cannot address one area without factoring in another. Findings from seven years of research conducted by the Senator Walter Rand Institute for Public Affairs among eight nonprofit collaboratives implementing the Whole Family Approach in Southern New Jersey, including Families to College, show positive changes for families with two caregivers:

- Primary caregivers report a significant improvement in children's educational outcomes.
- Both caregivers feel a significant increase in the help given and received in their relationship.
- Secondary caregivers report significantly reduced financial stress.

These findings reinforce the positive impact of the holistic services we offer, including: college visits, community mentoring, college and financial aid planning, career development days, and more.

TAKE ACTION

Help us transform our community for the better through education.
For our community, by our community.

EVALUATION PARTNER

RUTGERS
Senator Walter Rand Institute
for Public Affairs



FAMILIESTOCOLLEGE

FAMILIESTOCOLLEGE.ORG • INFO@FAMILIESTOCOLLEGE.ORG • @FAMILIESTOCOLLEGE

